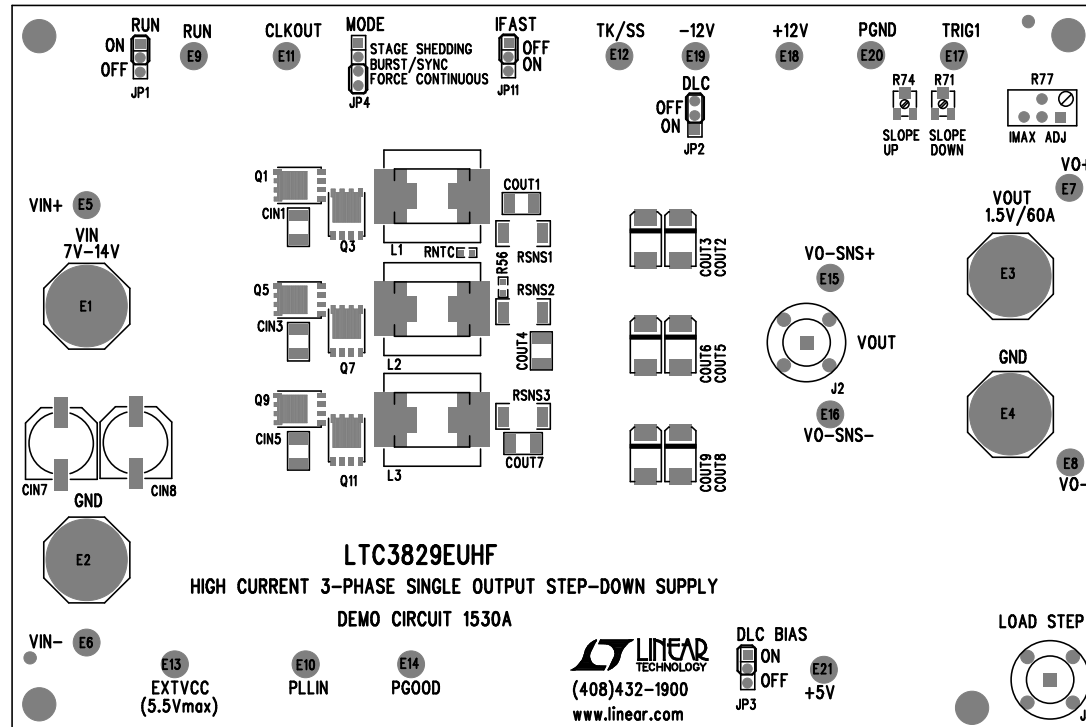
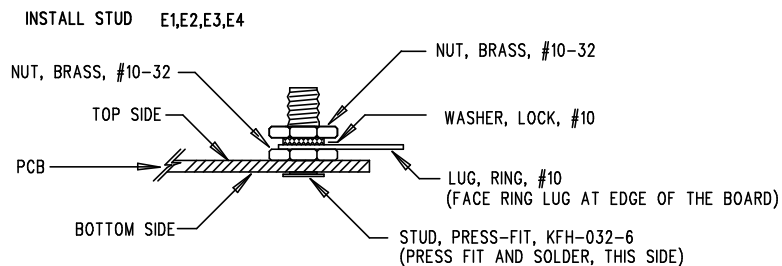


REVISION HISTORY				
ECO	REV	DESCRIPTION	APP. ENG.	DATE
-	2	PRODUCTION	JIAN LI	03-22-10



Silkscreen Top

LINEAR TECHNOLOGY  
DC1530A-LTC3829EUHF  
HIGH CURRENT 3-PHASE SINGLE OUTPUT STEP-DOWN SUPPLY  
DATE: 03-22-10



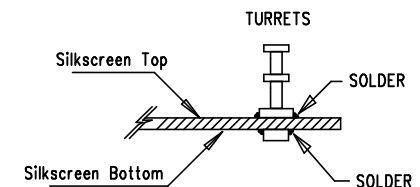
## NOTES: UNLESS OTHERWISE SPECIFIED

1. WORKMANSHIP SHALL BE IN ACCORDANCE WITH IPC-A-610.
2. ASSEMBLY PROCESS SHALL INCLUDE: REFLOW SOLDER TOP SIDE SMD.
3. PARTS TO OMIT WILL BE SPECIFIED ON THE BILLS OF MATERIAL. LOCATIONS OF OMITTED PARTS SHALL BE FREE OF SOLDER. MASK THE SOLDER STENCIL WHERE SMT PARTS ARE OMITTED.
4. INSTALL SHUNTS AS SHOWN ON ASSY DRAWING.

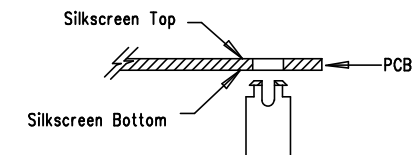
JP1 - ON, JP2 - OFF, JP3 - ON, JP4 - FORCE CONTINUOUS, JP11 - ON

5. DEPANELIZE BOARDS AFTER ASSEMBLY AND ROUTE-OUT THE BREAKOUT TABS ON FOUR SIDES OF THE BOARD EDGE.
6. DO NOT APPLY ANY KIND OF ASSEMBLY STAMP OR QA STAMP TO ANY BOARD.


### INSTALL TURRETS



### INSTALL STANDOFF



4X STANDOFF, NYLON, SNAP ON.

APPROVALS		 1630 MCCARTHY BLVD MILPITAS, CA 95035 PH: (408)432-1900 www.linear.com LTC CONFIDENTIAL- FOR CUSTOMER USE ONLY	
PCB DES.	A.K.		
APP ENG.	JIAN L.	TITLE: TOP ASSEMBLY DRAWING HIGH CURRENT 3-PHASE SINGLE OUTPUT STEP-DOWN SUPPLY	
		SIZE	REV.
		N/A	2
		IC NO.	LTC3829EUHF
			DEMO CIRCUIT 1530A
SCALE = NONE		FILENAME: DC1530A-2.PCB	
		SHT 1 OF 1	